

## Amoxicillin-USP Method

Column: Luna 5u C18(2) 100A

Dimensions: 250 x 4.6 mm ID

Order No: 00G-4252-E0

Elution Type: Isocratic

Eluent A: 50mM Potassium phosphate pH 5.0

Pct. A: 96

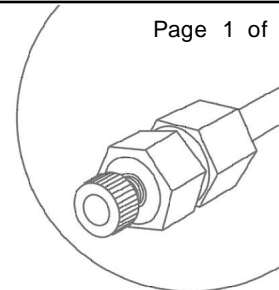
Eluent B: Acetonitrile

Pct. B: 4

Flow Rate: 1.5 mL/min

Col. Temp.: ambient

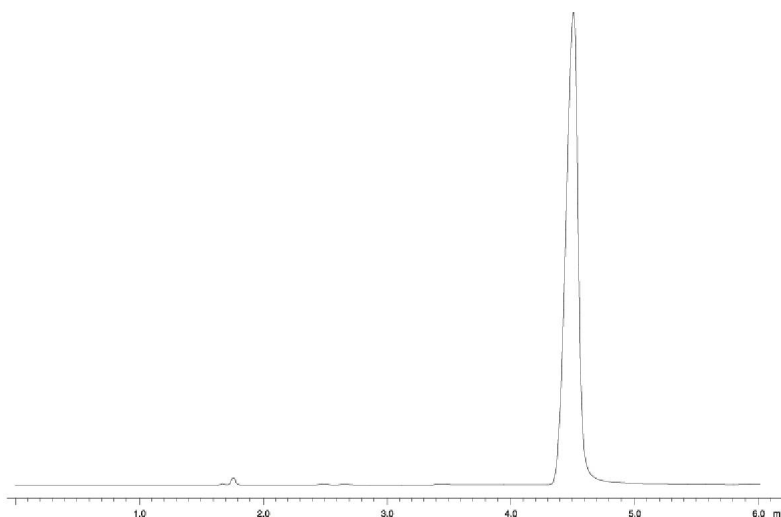
Detection: UV-Vis Abs. - Variable Wave. @ 230 nm (ambient)



**Products used in this Application:**

**LUNA**<sup>®</sup>

Analyst Note: Tailing < 2.5  
k' between 1.1-2.8



### ANALYTES:

- 1 Amoxicillin