

Jupiter® 300 C4 - Effect of Varying Mobile Phase Gradient Conditions

Page 1 of 1

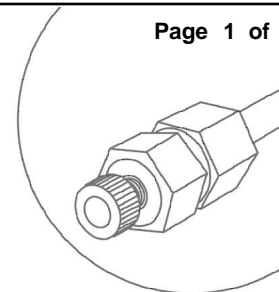
Column: Jupiter 5u C4 300A
Dimensions: 150 x 4.6 mm ID
Order No: 00F-4167-E0
Elution Type: Gradient
Eluent A: 0.1% TFA in Water
Eluent B: 90% ACN 0.09% TFA in Water

Gradient Profile:	Step No.	Time (min)	Pct A	Pct B
	1	0	80	20
	2	25	45	55

Flow Rate: 1 mL/min

Col. Temp.: 45 °C

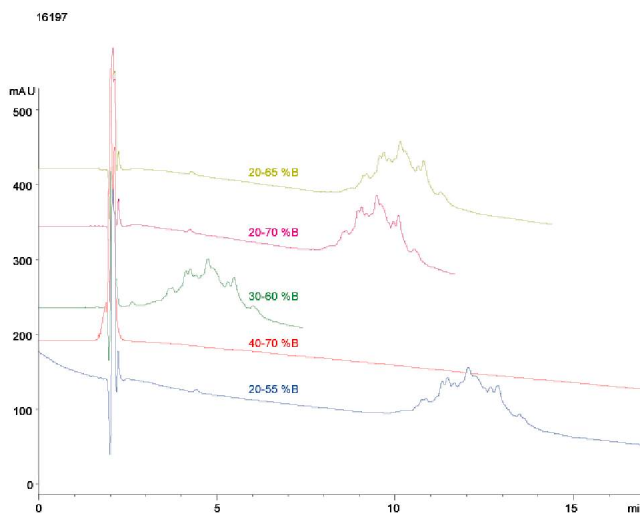
Detection: UV-Vis Abs. - Variable Wave. @ 214 nm (ambient)



Products used in this Application:



Analyst Note: Reversed phase runs of PEGylated ribonuclease A using different gradient conditions on a Jupiter 300 C4 column (gradient length 25 min). Note that if initial %B is increased much above 25% then retention and resolution of PEGylated forms is lost. Gradient slopes of between 1-2%/min appear to be a good compromise between resolution and run time.



ANALYTES:

- 1 PEGylated Ribonuclease A