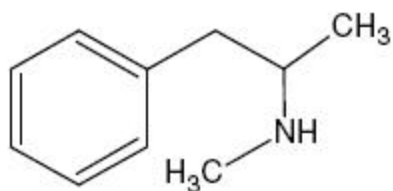


Amphetamine-PFP Derivatives, GC-MS Analysis

ZB-1MS (60m x 0.25mm x 0.25um)

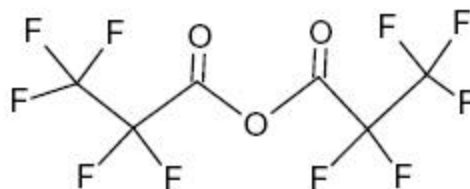
Oven: 80°C to 360°C at 14°C/min

*The rate of the temp. ramp may need to be adjusted for better resolution of the isomers of early eluting compounds.

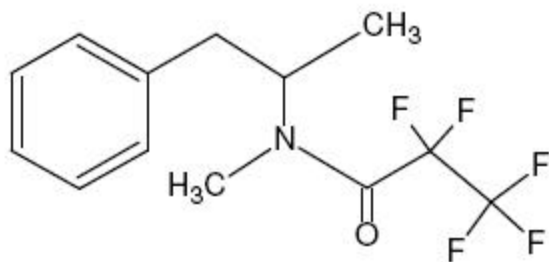


Methamphetamine

+

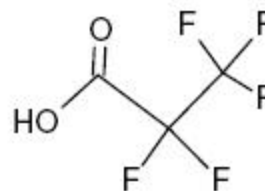


Pentafluoropropionic Anhydride



Methamphetamine-PFP

+



*Chromatogram acquired using an equivalent GC column.

