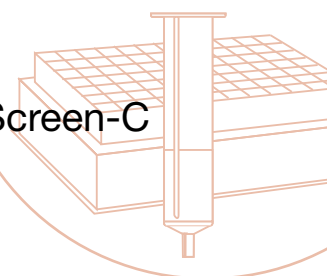
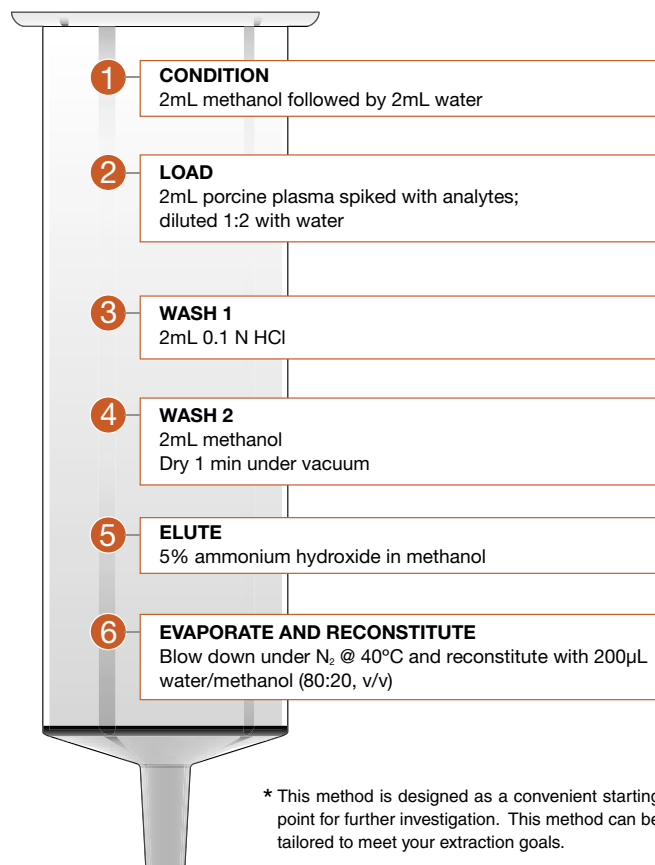


Cocaine and Metabolites Extracted from Plasma using Strata™ Screen-C



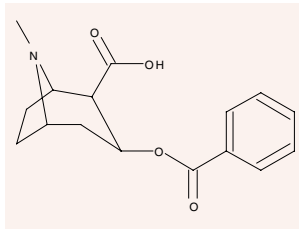
Strata Method* Strata Screen-C 150mg/3mL



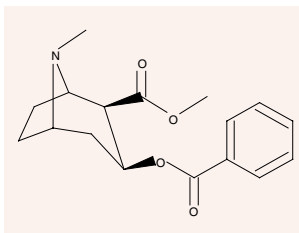
Ordering Information

Order Number	Description
8B-S016-EAK-TN	Screen-C 100mg/1mL Tubes (100/Box)
8B-S016-EBJ-TN	Screen-C 100mg/3mL Tubes (50/Box)
8B-S016-SBJ-TN	Screen-C 150mg/3mL Tubes (50/Box)
8B-S016-FBJ-TN	Screen-C 200mg/3mL Tubes (50/Box)
8B-S016-RBJ-TN	Screen-C 300mg/3mL Tubes (50/Box)
8B-S016-SCH-TN	Screen-C 150mg/6mL Tubes (30/Box)
8B-S016-RCH-TN	Screen-C 300mg/6mL Tubes (30/Box)
8B-S016-HCH-TN	Screen-C 500mg/6mL Tubes (30/Box)
8E-S016-CGB-TN	Screen-C 96-Well Plate 25mg/well (2/Box)
8E-S016-DGB-TN	Screen-C 96-Well Plate 50mg/well (2/Box)

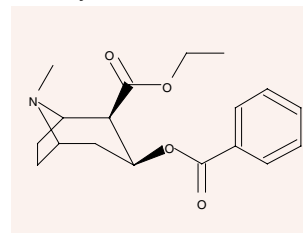
Benzoyllecgonine



Cocaine

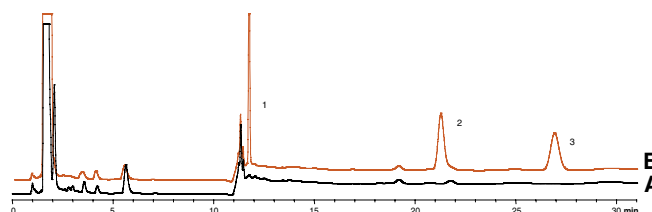


Cocaethylene



HPLC chromatograms of plasma extracts:

A) blank B) spiked sample



HPLC Analysis Conditions:

Column: Luna® 5µ, C18(2) 150 x 4.6mm (Order No: 00F-4252-E0-TN)
Sample: 50µL of reconstituted porcine plasma extract
Mobile Phase: A: 20mM KH₂PO₄ (pH 7); B: methanol
Gradient: A/B (90:10) hold 8 min to A/B (42:58) in 1 min, hold for 21 min
Flow rate: 1.0mL/min
Temperature: 25°C
Detector: UV @ 235nm
Peaks: 1. Benzoyllecgonine
 2. Cocaine
 3. Cocaethylene

Results

Analyte	Concentration (µg/mL)	% Recovery	% RSD (n=3)
Benzoyllecgonine	0.5	82	2.2
Cocaine	0.5	88	1.1
Cocaethylene	0.5	89	1.0

Note: recoveries were determined by comparing extracted concentrations vs. a reference standard.

For a digital copy of this Technical Note, please visit www.Phenomenex.com/TechNotes/CN018www.phenomenex.comPhenomenex products are available worldwide. For the distributor in your country, contact Phenomenex USA, International Department by telephone, fax or e-mail: international@phenomenex.com.

USA
 tel.: (310) 212-0555
 fax: (310) 328-7768
 email: info@phenomenex.com

Puerto Rico
 (800) 541-HPLC
 (310) 328-7768
info@phenomenex.com

Canada
 (800) 543-3681
 (310) 328-7768
info@phenomenex.com

United Kingdom
 01625-501367
 01625-501796
ukinfo@phenomenex.com

Germany
 06021-58830-0
 06021-58830-11
anfrage@phenomenex.com

New Zealand
 09-4780951
 09-4780952
info@phenomenex.co.nz

Australia
 1800-553-929
 1800-553-923
info@phenomenex.com.au

phenomenex®
 ...breaking with tradition™